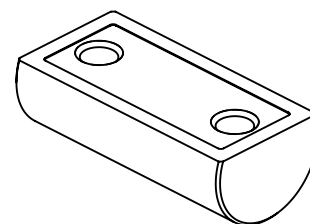
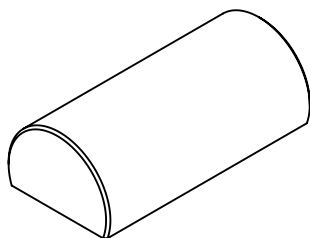
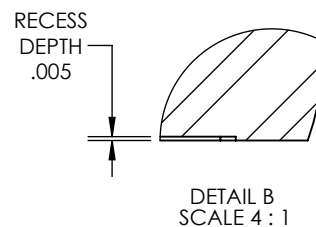
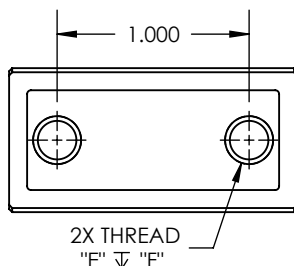
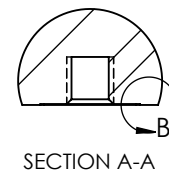
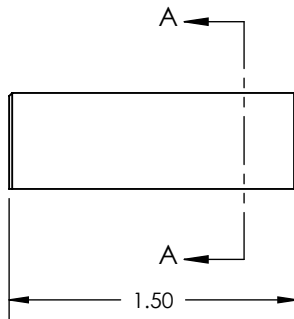
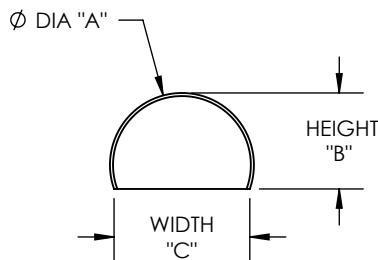


MATERIAL: STAINLESS STEEL 440C, HARDENED TO Rc 58 MIN

REV	ECO NO.	ECO TITLE	DATE
02	-----	DRAWING UPDATE	07/06/14



PART NUMBER	UNITS	DIAMETER "A"	HEIGHT "B"	WIDTH "C"	RECESS DEPTH "D"	THREAD "E"	MIN THREAD DEPTH "F"
250-TCR-T	in	0.2500 ± 0.0001	0.167 ± 0.002	0.235	0.005	#6-32	0.125
	mm	6.35 ± 0.003	4.24 ± 0.05	5.97	0.13		3.18
312-TCR-T	in	0.3125 ± 0.0001	0.208 ± 0.002	0.294	0.005	#6-32	0.154
	mm	7.94 ± 0.003	5.28 ± 0.05	7.47	0.13		3.91
375-TCR-T	in	0.3750 ± 0.0001	0.250 ± 0.002	0.353	0.005	#10-32	0.200
	mm	9.53 ± 0.003	6.35 ± 0.05	8.97	0.13		5.08
500-TCR-T	in	0.5000 ± 0.0001	0.334 ± 0.002	0.471	0.005	1/4-20	0.250
	mm	12.70 ± 0.003	8.48 ± 0.05	11.96	0.13		6.35
750-TCR-T	in	0.7500 ± 0.0001	0.500 ± 0.002	0.707	0.005	1/4-20	0.250
	mm	19.05 ± 0.003	12.70 ± 0.05	17.96	0.13		6.35
100-TCR-T	in	1.0000 ± 0.0001	0.750 ± 0.002	0.866	0.005	1/4-20	0.250
	mm	25.40 ± 0.003	19.05 ± 0.05	21.10	0.13		6.35

PROPRIETARY INFORMATION

UNLESS OTHERWISE SPECIFIED:
 DIMENSIONS ARE IN INCHES
 TOLERANCES:
 ANGULAR: 1°
 TWO PLACE DECIMAL ±.01
 THREE PLACE DECIMAL ±.005

THE INFORMATION CONTAINED IN THIS DRAWING IS THE SOLE PROPERTY OF MICRO SURFACE ENGR. INC. AND IS FURNISHED FOR INFORMATIONAL PURPOSES ONLY.

© 2006 MICRO SURFACE ENGR. INC.

INTERPRET GEOMETRIC TOLERANCING PER: ANSI Y14.5



Bal-tecTM
 1550 E. SLAUSON AVE
 LOS ANGELES, CA 90011

TITLE		NUMBER		REV
TRUNCATED & THREADED CYLINDER		SEE TABLE		02
ENGINEER	DWN BY	DATE DRAWN	SIZE	SCALE
GENE GLEASON	BLC	07/06/14	A	1:1
PAGE			PAGE	
1 OF 1			1 OF 1	