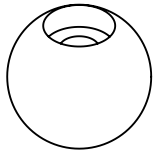
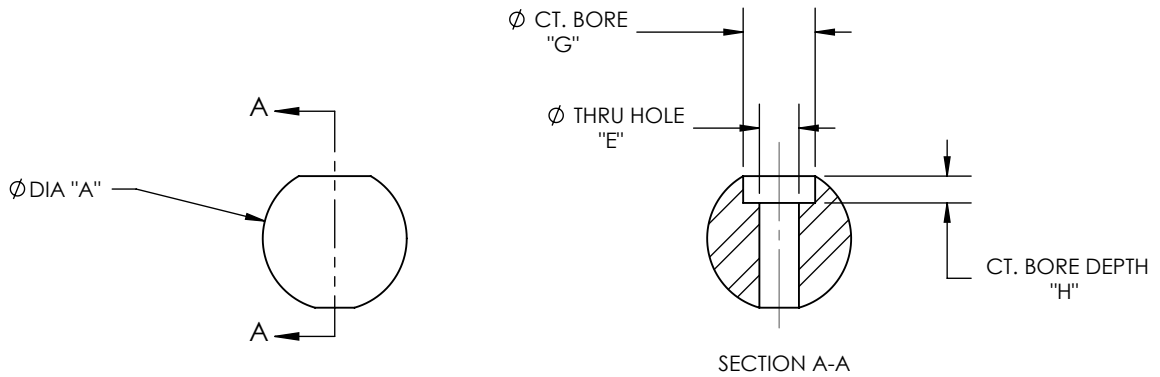


MATERIAL: STAINLESS STEEL 440C, HARDENED TO Rc 58 MIN

| REV | ECO NO. | ECO TITLE | DATE |
|-----|---------|----------------|----------|
| 02 | ----- | DRAWING UPDATE | 12/02/06 |
| 03 | ----- | DRAWING UPDATE | 07/19/14 |



| PART NUMBER | UNITS | DIAMETER "A" | SPHERICITY | SURFACE ROUGHNESS MAX | THRU HOLE DIA "E" | CT BORE DIA "G" | CT BORE DEPTH "H" |
|-------------|-------|-----------------|------------|-----------------------|-------------------|-----------------|-------------------|
| 312-B-CB | in | 0.3125 ± 0.0001 | 0.000010 | .7 Micro Inch Ra | 0.125 | 0.218 | 0.125 |
| | mm | 7.94 ± 0.003 | 0.00025 | | 3.18 | 5.54 | 3.18 |
| 375-B-CB | in | 0.3750 ± 0.0001 | 0.000010 | .7 Micro Inch Ra | 0.125 | 0.218 | 0.125 |
| | mm | 9.53 ± 0.003 | 0.00025 | | 3.18 | 5.54 | 3.18 |
| 500-B-CB | in | 0.5000 ± 0.0001 | 0.000010 | .7 Micro Inch Ra | 0.154 | 0.281 | 0.138 |
| | mm | 12.70 ± 0.003 | 0.00025 | | 3.91 | 7.14 | 3.51 |
| 750-B-CB | in | 0.7500 ± 0.0001 | 0.000010 | .7 Micro Inch Ra | 0.206 | 0.375 | 0.19 |
| | mm | 19.05 ± 0.003 | 0.00025 | | 5.23 | 9.53 | 4.83 |
| 100-B-CB | in | 1.0000 ± 0.0001 | 0.000010 | .7 Micro Inch Ra | 0.250 | 0.375 | 0.25 |
| | mm | 25.40 ± 0.003 | 0.00025 | | 6.35 | 9.53 | 6.35 |

| | | | | | | |
|--|--|--|-----------|------------|--------|-------|
| <p>PROPRIETARY INFORMATION</p> <p>THE INFORMATION CONTAINED IN THIS DRAWING IS THE SOLE PROPERTY OF MICRO SURFACE ENGR. INC. AND IS FURNISHED FOR INFORMATIONAL PURPOSES ONLY.</p> <p>© 2006 MICRO SURFACE ENGR. INC.</p> | <p>UNLESS OTHERWISE SPECIFIED:</p> <p>DIMENSIONS ARE IN INCHES</p> <p>TOLERANCES: ANGULAR: 1° TWO PLACE DECIMAL ±.01 THREE PLACE DECIMAL ±.005</p> <p>INTERPRET GEOMETRIC TOLERANCING PER: ANSI Y14.5</p> | <p>Bal-tecTM 1550 E. SLAUSON AVE LOS ANGELES, CA 90011</p> | TITLE | | NUMBER | REV |
| | FULL BALL W/ COUNTERBORED HOLE | | SEE TABLE | 03 | | |
| | ENGINEER | | DWN BY | DATE DRAWN | SIZE | SCALE |
| GENE GLEASON | BLC | 07/19/14 | A | 1:1 | 1 OF 1 | |