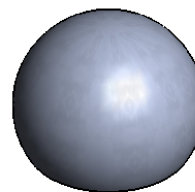
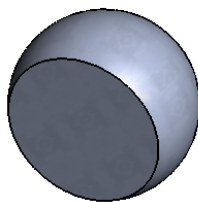
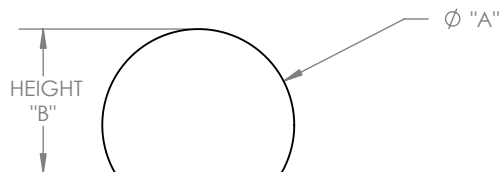


MATERIAL: STAINLESS STEEL 440C, HARDENED TO Rc 58 MIN

REV	ECO NO.	ECO TITLE	DATE
---	-----	-----	--/--/--



PART NUMBER	UNITS	DIAMETER "A"	SHPERICITY	SURFACE ROUGHNESS MAX	HEIGHT "B"
187-TB	in	0.1875 ± 0.0001	0.000010	.7 Micro Inch Ra	0.125 ± 0.002
	mm	4.76 ± 0.003	0.00025		3.18 ± 0.05
250-TB	in	0.2500 ± 0.0001	0.000010	.7 Micro Inch Ra	0.167 ± 0.002
	mm	6.35 ± 0.003	0.00025		4.24 ± 0.05
312-TB	in	0.3125 ± 0.0001	0.000010	.7 Micro Inch Ra	0.208 ± 0.002
	mm	7.94 ± 0.003	0.00025		5.28 ± 0.05
375-TB	in	0.3750 ± 0.0001	0.000010	.7 Micro Inch Ra	0.250 ± 0.002
	mm	9.53 ± 0.003	0.00025		6.35 ± 0.05
500-TB	in	0.5000 ± 0.0001	0.000010	.7 Micro Inch Ra	0.334 ± 0.002
	mm	12.70 ± 0.003	0.00025		8.48 ± 0.05
750-TB	in	0.7500 ± 0.0001	0.000010	.7 Micro Inch Ra	0.500 ± 0.002
	mm	19.05 ± 0.003	0.00025		12.70 ± 0.05
100-TB	in	1.0000 ± 0.0001	0.000010	.7 Micro Inch Ra	0.750 ± 0.002
	mm	25.40 ± 0.003	0.00025		19.05 ± 0.05

<p>PROPRIETARY INFORMATION</p> <p>THE INFORMATION CONTAINED IN THIS DRAWING IS THE SOLE PROPERTY OF MICRO SURFACE ENGR. INC. AND IS FURNISHED FOR INFORMATIONAL PURPOSES ONLY.</p> <p>© 2006 MICRO SURFACE ENGR. INC.</p>	<p>UNLESS OTHERWISE SPECIFIED:</p> <p>DIMENSIONS ARE IN INCHES</p> <p>TOLERANCES: ANGULAR: 1° TWO PLACE DECIMAL ±.01 THREE PLACE DECIMAL ±.005</p> <p>INTERPRET GEOMETRIC TOLERANCING PER: ANSI Y14.5</p>		<p>Bal-tecTM</p> <p>1550 E. SLAUSON AVE LOS ANGELES, CA 90011</p>		
	<p>TITLE: TRUNCATED BALL</p>		<p>NUMBER: SEE TABLE</p>	<p>REV: 02</p>	
	<p>ENGINEER: GENE GLEASON</p>		<p>DWN BY: RJV</p>	<p>DATE DRAWN: 12/02/06</p>	<p>SIZE: A</p>