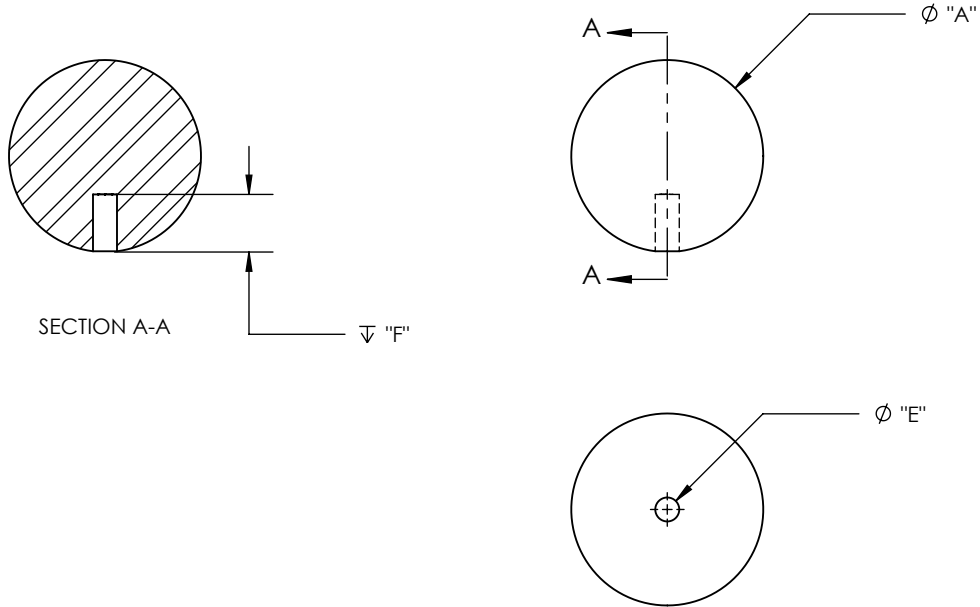


MATERIAL: STAINLESS STEEL 440C, HARDENED TO Rc 58 MIN

REV	ECO NO.	ECO TITLE	DATE
03	-----	DRAWING UPDATE	07/18/14



PART NUMBER	UNITS	DIAMETER "A"	SHPERICITY	SURFACE ROUGHNESS MAX	HOLE DIA "E"	HOLE DEPTH "F"
250-BBH	in	0.2500 ± 0.0001	0.000010	.7 Micro Inch Ra	0.063	0.125
	mm	6.35 ± 0.003	0.00025		1.59	3.17
312-BBH	in	0.3125 ± 0.0001	0.000010	.7 Micro Inch Ra	0.094	0.125
	mm	7.94 ± 0.003	0.00025		2.38	3.17
375-BBH	in	0.3750 ± 0.0001	0.000010	.7 Micro Inch Ra	0.094	0.125
	mm	9.53 ± 0.003	0.00025		2.38	3.17
500-BBH	in	0.5000 ± 0.0001	0.000010	.7 Micro Inch Ra	0.125	0.250
	mm	12.70 ± 0.003	0.00025		3.17	6.35
750-BBH	in	0.7500 ± 0.0001	0.000010	.7 Micro Inch Ra	0.125	0.300
	mm	19.05 ± 0.003	0.00025		3.17	7.62
100-BBH	in	1.0000 ± 0.0001	0.000010	.7 Micro Inch Ra	0.125	0.300
	mm	25.40 ± 0.003	0.00025		3.17	7.62

<p>PROPRIETARY INFORMATION</p> <p>THE INFORMATION CONTAINED IN THIS DRAWING IS THE SOLE PROPERTY OF MICRO SURFACE ENGR. INC. AND IS FURNISHED FOR INFORMATIONAL PURPOSES ONLY.</p> <p>© 2007 MICRO SURFACE ENGR. INC.</p>	<p>UNLESS OTHERWISE SPECIFIED:</p> <p>DIMENSIONS ARE IN INCHES</p> <p>TOLERANCES: ANGULAR: 1° TWO PLACE DECIMAL ±.01 THREE PLACE DECIMAL ±.005</p> <p>INTERPRET GEOMETRIC TOLERANCING PER: ANSI Y14.5</p>	 <p>Bal-tecTM 1550 E. SLAUSON AVE LOS ANGELES, CA 90011</p>	<p>TITLE</p> <p>BALL WITH CONCENTRIC HOLE</p>		<p>NUMBER</p> <p>SEE TABLE</p>	<p>REV</p> <p>03</p>	
	<p>ENGINEER</p> <p>GENE GLEASON</p>		<p>DWN BY</p> <p>BLC</p>	<p>DATE DRAWN</p> <p>07/18/14</p>	<p>SIZE</p> <p>A</p>	<p>SCALE</p> <p>1:1</p>	<p>PAGE</p> <p>1 OF 1</p>